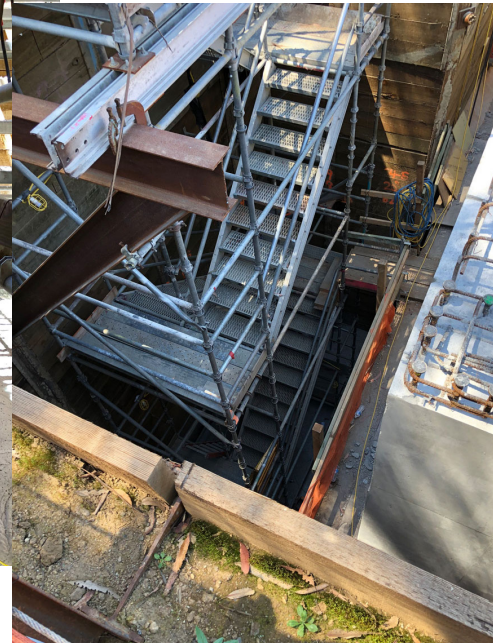
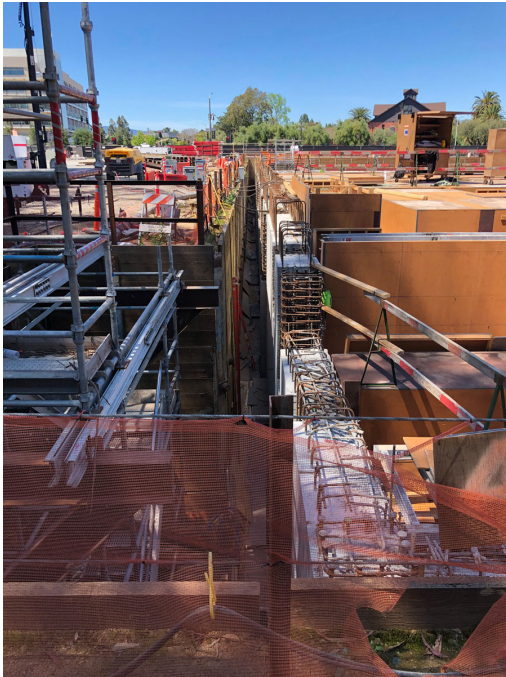




# Project Spotlights: Stanford University's Center for Academic Medicine



## CONTRACTOR

Level 10 Construction

## ARCHITECT

Hellmuth Obata + Kassabaum

## GROSS SQUARE FEET

170,000

## CONSTRUCTION SCHEDULE

Fall 2017–Fall 2020

## CATEGORY

Permeable LCC, Value Engineering

## ABOUT THE PROJECT

A 3' void between soldier pile/wood lagging and the structural basement walls was originally designed to include 40' of compacted pea gravel.

## THE SOLUTION

Value engineering was performed, and pervious lightweight cellular concrete (PLCC) became the preferred engineered fill option, due to its ease of placement and the narrow access for other traditional backfill options.