



## GENERAL CONTRACTOR

W.A. Richardson Builders, LLC (WARB)

## ROOFER

Eberhard Roofing

## LOCATION

Las Vegas, NV

## CATEGORY

Insulated Concrete Roofing Systems



### ABOUT THE PROJECT

Along the Las Vegas Strip, this multi-billion-dollar project was previously the site of the Echelon Place construction and the Stardust Resort and Casino. Construction is underway for the new Asian-themed Resorts World Las Vegas project, which will feature a 3,500-room property, a 5,000-capacity theater, 350,000 sq. ft. of meeting and event space, and much more.

# Project Spotlights: Resorts World Las Vegas (Roofing)



### THE SOLUTION

For Eberhard Roofing, Cell-Crete is installing Elastizell Lightweight Insulating Concrete to help create a slope to drain while also providing the customer with an R-value. We are installing on most roof decks around the tower, including the tower roof, itself. Our company was chosen because by using our system, in addition to providing slope, R-value, and the lasting lifetime of the building, we are able to install at a much quicker rate than the standard roofing/waterproofing installation, which ultimately gives the customer added time on their schedule.



# Project Spotlights: Resorts World Las Vegas (Flooring)

## GENERAL CONTRACTOR

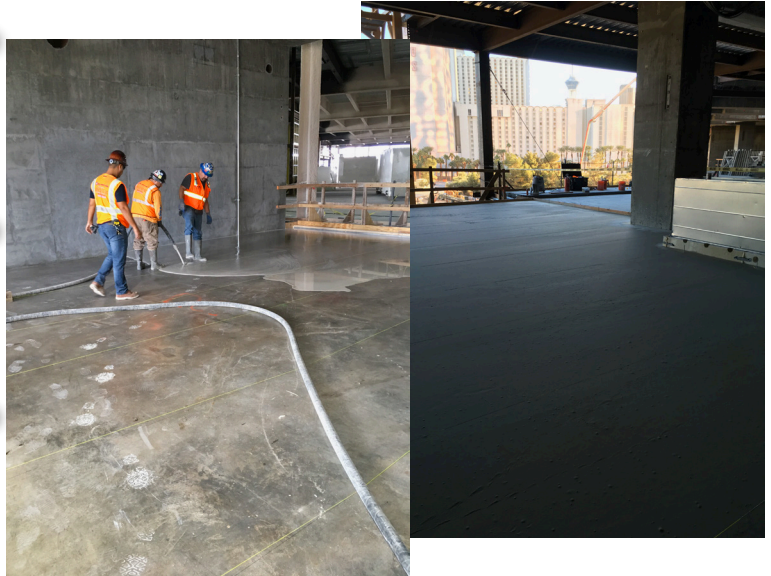
W.A. Richardson Builders, LLC (WARB)

## LOCATION

Las Vegas, NV

## CATEGORY

Floor Leveling/Infilling



## ABOUT THE PROJECT

As the previous location of the Echelon Place and Stardust Resort and Casino, W.A. Richardson Builders, LLC (WARB) became the general contractor (GC) for Resorts World Las Vegas. This \$4.3 billion project will feature an Asian-themed resort, along with a total of 3,500 hotel rooms, a 5,000-seat theater, a 220,000 sq. ft. pool complex (including an 1,800 sq. ft. infinity pool), and many other amenities.

## THE SOLUTION

Since this was previously the site of the Echelon Place that stopped construction, there were many areas on the existing deck that were left uneven and depressed. We are able to flatten and infill by installing Maxxon's Duracap and Commercial Topping Gypsum product as a way to provide the GC with a flat surface to set the framing on or to leave exposed with the installation of various floor coverings and an epoxy over the top of our finished surface.