



LOCATION

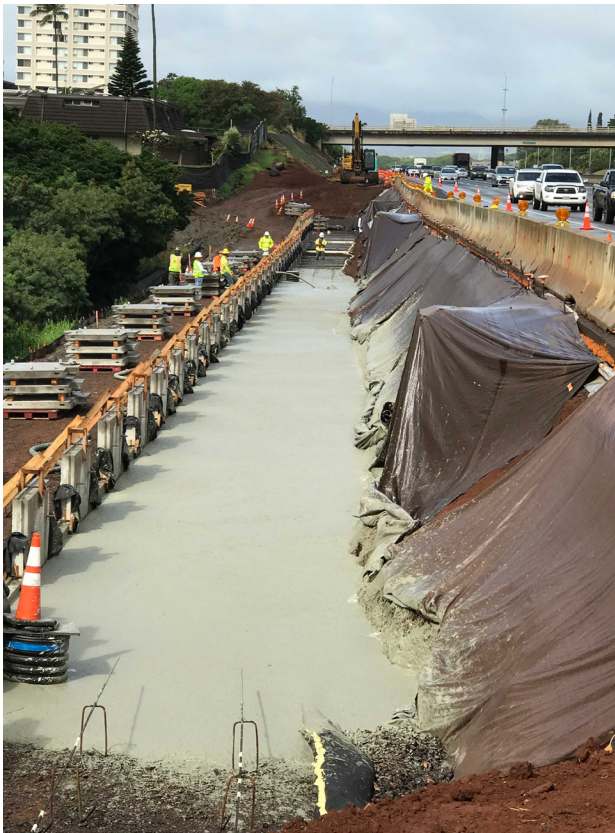
Honolulu, HI

COMPLETION DATE

2019

CATEGORY

Precast Panels with LCC



Project Spotlights: HWY-1: Shoulder Widening



ABOUT THE PROJECT

Precast panels and lightweight cellular concrete (LCC) make a well-suited solution for sites where significant settlement is expected. Such sites may require foundation improvement—a costly but effective solution. A less-costly solution is to reduce the load applied to the foundation soil by using a lightweight aggregate or low-density cellular concrete (LDCC).

THE SOLUTION

Reinforced earth was selected to provide the panels for the project, and Cell-Crete backfilled behind the panels providing the solution for the shoulder-widening proposed construction on compressible soils without needing large equipment for foundation improvement.