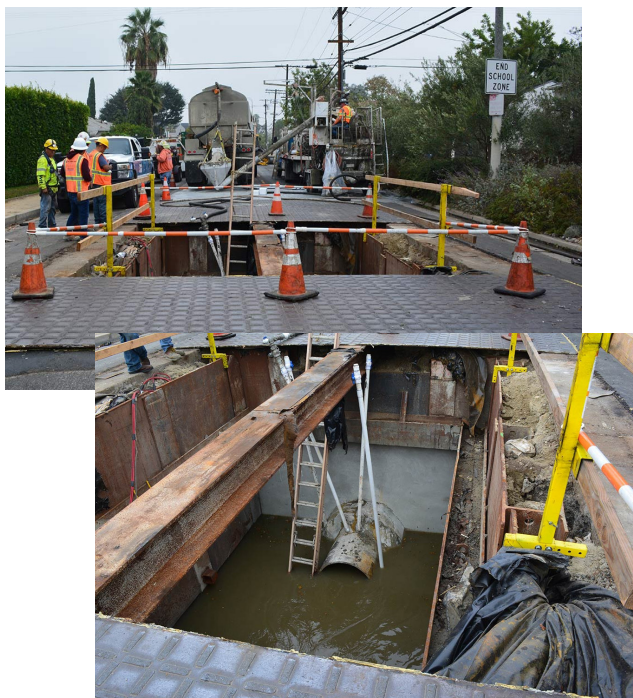




Project Spotlights: City of Los Angeles Public Works Sewer Reline Projects



GENERAL CONTRACTOR

Kiewit Corporation

COMPLETION DATE

Ongoing

CATEGORY

Annular Grouting

ABOUT THE PROJECT

90-year-old brick-lined sewers in Los Angeles are failing. The city is making a big effort to reline existing sewer lines since most of these lines are almost completely deteriorated at the crown.

THE SOLUTION

New semi-elliptical lining is being installed and grouted in place with cellular concrete. One of the benefits of grouting a live sewer line is the ability to control the flow in the pipeline and keep the pipe from becoming buoyant during grouting.